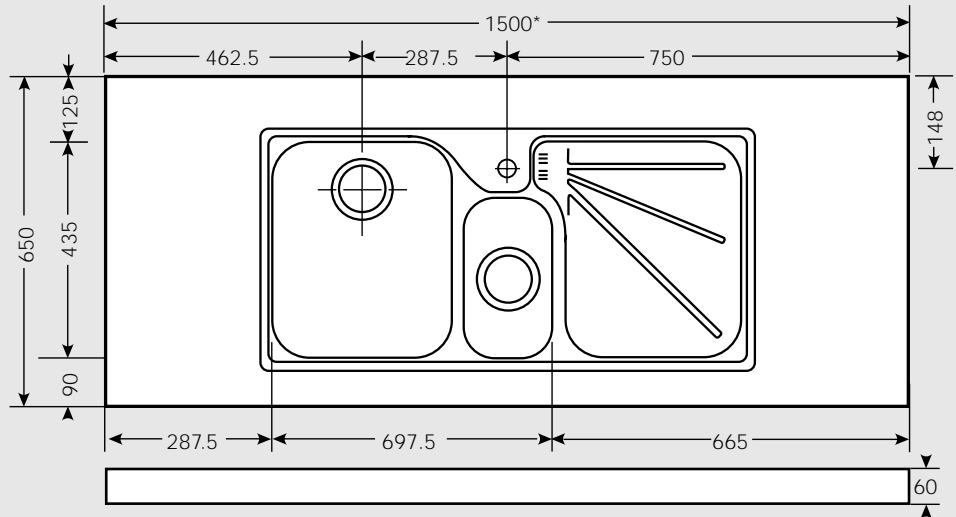


Range Sink ARX 754 Specifications

- High design concept
- 90mm Waste with Basket Strainer Waste. Capable of adaptation to take Waste Disposal Unit
- 4 colours of bespoke accessories available
- Convenient horizontal overflow
- Large diagonal bowl dimension. Extra large main and a half bowl located at front rim of sink profile
- Integrated into large Stainless Steel worktop area. Provides totally hygienic sink environment
- Water lip spillage on surrounding area
- Also available 1200mm*



Material: 304 Austenitic 18/10 Stainless Steel

Application: Specialised stand alone unit

Bowl size: 350 x 435 x 180 }
170 x 320 x 130 } Bowls welded to frame

Drainer Format: Left or right hand drainer available

Cut-out size: Not applicable

Colour: Stainless Steel

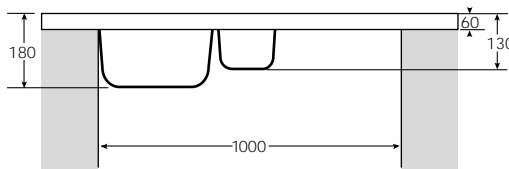
Seal: Not applicable

Insulation: Grey Dynaphon for heat and sound

Heat Resistance: Up to 300°C

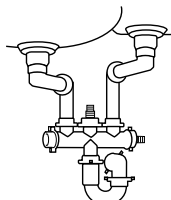
Earthing Point: Utilise frame

Cabinet size: Bespoke to size of unit (Min 1000 base)

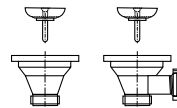


Fixing Clips: Not applicable

Suggested Plumbing Kit:



Waste: 1 x Lira 90mm Basket Strainer Waste with overflow
1 x Lira 90mm Basket Strainer Wastes



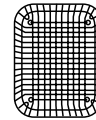
Overflow:



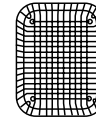
Accessories available:



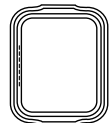
Chopping Board Iroko Large



Drainer Basket Available in White, Almond, Brown or Black



Drainer Basket Stainless Steel



Drainer Tray Available in White, Almond, Brown or Black



Drainer Tray Stainless Steel



Strainer Bowl Available in White, Almond, Brown or Black



Strainer Bowl Stainless Steel

Taps: Any Franke tap can be utilised with this model*.

*Ceramic disc taps in certain installations or where there is a low head of water (below 3 metres) may not provide adequate flow rates. You are advised to check with your supplier.

Guarantee: Franke sinks are guaranteed for 25 years against manufacturing defects.